

The long-term effect of saline and phosphate buffer solution on MTA: an SEM and EPMA Investigation

Masoud Parirokh^{1*} DDS, MS, Saeed Asgary² DDS, MS, Mohammad Jafar Eghbal² DDS, MS, Jamileh Ghoddusi³ DDS, MS, Frank Brink⁴ PhD, Sara Askarifar⁵ DDS, Mahmoud Torabinejad⁶ DDS, MS, PhD, and Maryam Raoof⁷ DDS, MS

1. Professor of Endodontics, Dental School, Kerman University of Medical Sciences, Kerman, Iran.

2. Professor of Endodontics, Iranian Center for Endodontic Research, Dental Research Center, Shahid Beheshti University M.C., Tehran, Iran.

3. Associate Professor of Endodontics, Dental School, Mashad University of Medical Sciences, Mashad, Iran.

4. Senior Technical Officer, Electron Microscopy Unit, Research School of Biological Sciences, Australian National University, Canberra, Australia

5. Postgraduate Student of Endodontic Dept., School of Dentistry, Kerman University of Medical Sciences, Kerman, Iran.

6. Professor of Endodontics, School of Dentistry, Loma Linda University, USA.

7. Assistant Professor of Endodontic Dept., School of Dentistry, Kerman University of Medical Sciences, Kerman, Iran.

Abstract

Introduction: To examine the long-term effects of normal saline and a synthetic tissue fluid (phosphate buffered saline, PBS) on mineral trioxide aggregate (MTA).

Materials and Methods: Root-ends of twelve extracted human teeth were resected; root-end cavities were prepared and filled with MTA. Samples were randomly divided into two groups of six each. Teeth in group I were placed in normal saline, whilst teeth in group II were placed in PBS. After five months, elemental analysis of the surface of the root-end filling was performed using electron probe microanalysis (EPMA).

Results: Results showed that all teeth kept in PBS formed crystal deposits. In contrast, no such crystal formation was observed in teeth kept in normal saline solution. The results of elemental analysis showed that the composition of the crystals observed for teeth kept in PBS was consistent with that of a mineral hydroxyapatite, $\text{Ca}_{10}(\text{PO}_4)_6(\text{OH})_2$.

Conclusion: Based on these *in vitro* results, we suggest that the hydration of MTA surface and the release of calcium from MTA in contact with phosphorous of PBS produced hydroxyapatite crystals over MTA and it may be a mechanism which is responsible for cementum formation during *in vivo* studies.

Keywords: EPMA, MTA, PBS, Retro filling material, SEM, Storage media.

Received January 2006; accepted May 2006

*Correspondence: Dr. Masoud Parirokh, Endodontic Dept., School of Dentistry, Shafa Ave., Jomhori Blvd., Kerman, Iran. E-mail; masoudparirokh@yahoo.com

Introduction

Healing after periradicular surgery necessitates the regeneration of the apical attachment apparatus, as well as osseous repair of medullary and cortical bone. Deposition of cementum over the resected root end is an essential step in dento-alveolar healing (1). A number of studies have attempted to identify the ideal root-end filling material (2-5). These materials include: amalgam, gutta-percha, composite resins, glass ionomers and zinc

oxide eugenol cements such as IRM and Super EBA (3,4,6). Mineral trioxide aggregate (MTA) has been introduced as the most tissue compatible root-end filling material (5,7). Its biocompatibility (8-12), antimicrobial effect (13,14), sealing ability (2,4,15) and marginal adaptation (16) have been confirmed.

MTA is a powder consisting of fine hydrophilic particles that harden when they come in contact with water (17). Hydration of the powder results in a colloidal gel that solidifies to a hard

structure. Characteristics of hardened MTA depend on the size of the particles, the water-to-powder ratio, the temperature and humidity at the application site, as well as the amount of air trapped in the mixture (18). A recently published study showed that grey MTA composed of calcium, silicon, aluminium, iron, bismuth and oxygen (19).

The results of MTA studies in experimental animals indicated that MTA significantly causes less inflammation than amalgam and Super EBA (5,20). More importantly, cementum bridge formation occurs directly over the MTA when this material is used as a root-end filling material (5,7).

The mechanism involved in the cementogenesis of MTA is unclear (21). Sarkar *et al.* (22) used MTA as a root canal filling material and kept their samples in a phosphate buffered saline (PBS). They concluded that Ca from MTA reacts with phosphorus in PBS yielding hydroxyapatite. The same results were obtained by Bozeman *et al.*'s study (23). However, previous research studies that kept MTA in different liquids used MTA as a root filling material (22) or placed the material in chlorinated polyvinyl chloride (CPVC) pipe as a mold (23).

One of the characteristics of bioactive materials is the ability to form an apatite-like layer on their surfaces *in-vivo* in contact with physiological fluids (24), or *in-vitro* in contact with simulated body fluids such as PBS (25).

Therefore, the purpose of this study was to compare the chemical reaction occurring on MTA surfaces in contact with normal saline or PBS in simulated clinical conditions.

Materials and Methods

Both the Ethic Human Committees of Kerman University of Medical Sciences and The Australian National University approved this study.

Twelve freshly extracted human single-rooted teeth that were extracted due to either periodontal problems or for other orthodontic reasons were used in this study. After access cavity preparation and root canal preparation by crown down technique, the canals were obturated with gutta-percha (Ariadent, Tehran, Iran) and AH26 (Dentsply, GmbH, Konstanz,

Germany) root canal sealer. The apical third of each root was resected using a No.701 fissure bur (Diatech, Heerbrugg, Switzerland) in a high-speed handpiece with copious water spray. In each tooth, a root-end cavity was prepared using an ultrasonic device (EMS-Switzerland). The cavity that was prepared according to the manufacturer's instruction was filled with grey MTA (ProRoot MTA, Dentsply Tulsa Dental, Tulsa, OK, USA). The teeth were randomly divided into two groups of six each. Teeth in group I were placed in phosphate buffered saline (pH=7.4), whilst teeth in group II were placed in normal saline. The teeth in both groups were incubated at 37°C. After five months, all samples were removed from the solution and air-dried. Each sample was photographed using a stereomicroscope (Wild Heerbrugg-Leica, Switzerland) at x6.4 to x32 magnification.

All samples except one in each PBS or normal saline group were used for scanning electron microscopy (SEM) and for elemental analysis. They were coated with ~20nm of carbon. Images were collected using JEOL JSM6400 (JEOL, Japan) and Cambridge S360 (England) SEMs. Energy dispersive x-ray analysis (EDXA) for elemental analyses was carried out on a JEOL 6400 equipped with an Oxford Instruments (Cambridge, England) light element-sensitive detector.

One sample from each PBS and normal saline groups were longitudinally split for observing the relation of the crystals (if present) and MTA.

Results

All root-end cavities that were kept in PBS showed a growth of white crystals over the margin of the MTA and resected root ends and in many of them a white plaque over the entire surface of the retrograde cavity could be observed. In contrast, none of the teeth that were kept in normal saline revealed such a pattern of crystal growth over the MTA (Figures 1A, B, and C). The sample of PBS group which was split longitudinally showed a thin layer of the crystals formed on MTA (Figure 1D).

Electron probe analysis showed that the MTA kept in contact with saline suffered a significant

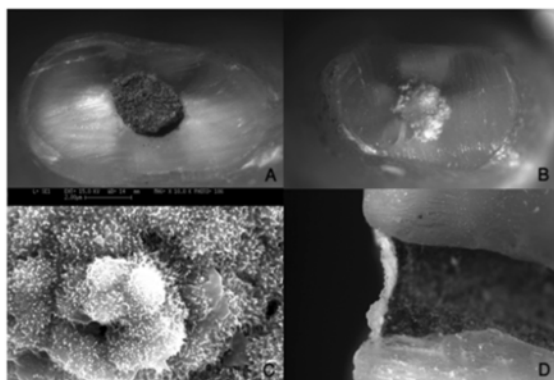


Figure 1- A) MTA surface kept in normal saline for 5 months, B) MTA surface kept in PBS for 5 months, C) Scanning electron micrograph of hydroxyapatite crystal over MTA (x10000), and D) The relationship between MTA and HA crystals from the profile view of a split root.

depletion of calcium (measured as CaO wt% concentration) compared to the original composition of grey MTA (Table-1, and Figure 2). Analyses of the white crystals formed on the MTA kept in PBS indicated formation of a substance with a composition consistent with that of hydroxyapatite (HA, $\text{Ca}_{10}(\text{PO}_4)_6(\text{OH})_2$) (Table-1 and Figure 3).

Discussion

Functioning periradicular tissues consist of healthy cementum, periodontal ligament and bone. The ability to enhance the regeneration of the periodontal attachment apparatus is a desirable property for any material used as root canal filling, apexification, root-end filling or perforation repair. Ideally, any material used in these situations should result in not just the formation of new bone, but also periodontal ligament and cementum. Histological reports have indicated that new cementum may be formed adjacent to a few dental materials when placed in contact with periodontal tissues (26). Torabinejad *et al.* believe that the deposition of cementum against MTA may be due to a number of factors, such as sealing ability, biocompatibility or alkaline pH on setting (27). Research studies have claimed that calcite crystals are formed over calcium hydroxide in contact with pulp tissue, or that the culture medium produces deposition of calcite crystals (28). The same crystals observed with calcium hydroxide were reported for MTA (8). Baek *et al.* in their study found two different calcified

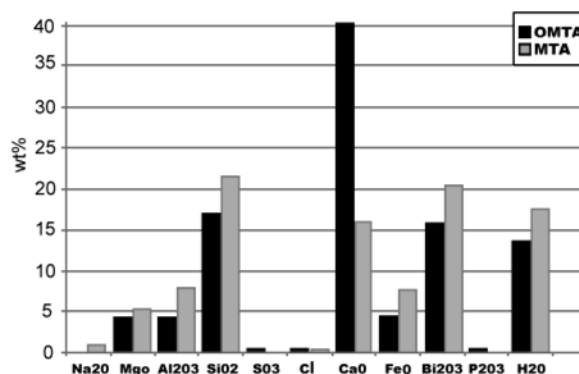


Figure 2- Comparison of electron probe microanalysis between freshly mixed MTA and MTA kept in normal saline for 5 months. For useful comparison, the data has been normalized to the same silicon composition.

material deposits over MTA, a crystalline structure and newly deposited cementum (5). However, recent published studies, as well as the results in this study, have shown that HA crystals are formed over MTA in a tissue-synthetic fluid (*i.e.*, PBS) (22,23).

Sakar *et al.* suggest that the two clinically significant properties of MTA, sealing ability and biocompatibility, stem from physico-chemical reactions (22). Previous research studies as well as this study lead us to surmise that the product of this reaction of MTA with the oral environment is not calcite, but HA (22,23). Previous research studies showed that gel glasses containing CaO–P₂O₅–SiO₂ after soaking in a synthetic tissue fluid such as PBS could produce an amorphous layer of calcium phosphate and after 7 days on the surface of the gel glasses needle-like apatite crystallites were appeared (29,30). The results of this study have shown that although MTA has not had phosphorous in its contents the reaction between PBS and MTA surface produced HA. HA exhibits excellent biocompatibility manifested in minimal tissue toxicity and foreign-body reaction, osteoinductivity, as well as osteogenicity (31). The similarity in the mode of biologic action of calcium-containing materials stems from their propensity to release Ca and their ability to form HA.

In this study, the comparison of the measured elemental concentrations of MTA kept in normal saline for five months and the original MTA composition (32) indicated a significant drop in calcium (reported as CaO), while other

Table-1: Quantitative analysis results (in wt %) for MTA kept in normal saline (NS) and crystals formed on MTA under phosphate buffered saline (PBS) solution. The original MTA (top) and hydroxyapatite (HA) standard mineral composition (bottom) have been included for comparison.

composition Samples	Na ₂ O	MgO	Al ₂ O ₃	SiO ₂	P ₂ O ₅	SO ₃	Cl	CaO	FeO	Bi ₂ O ₃	H ₂ O
MTA	0	3.1	4.3	17	0.18	0.5	0.4	40.45	4.4	15.9	13.7
MTA-NS	1.4 ±0.5	5.7 ±1.3	8.2 ±2.4	22 ±5.0	0	0.3 ±0.4	0.5 ±0.2	16.4 ±3.6	8.0 ±1.1	18.5 ±3.4	18.1 ±3.4
MTA- PBS	-	-	-	-	44.7 ±3.8	-	-	53.5 ±5.8	-	-	1.8
HA	-	-	-	-	42.39	-	-	55.38	-	-	1.70

major elemental constituents appear relatively unchanged (Figure 2). A significant proportion of calcium has been taken up in the solution. Calcium depletion is in agreement with results of previously published studies which have shown that MTA could solubilize and release calcium in contact with aqueous environment (21-23). Previous published studies which used distilled water as a media for keeping MTA showed that calcium hydroxide was formed (18,19). MTA does not have calcium hydroxide, but it has calcium rich phase fraction that could react with tissue fluids to form calcium hydroxide. It has been confirmed that the soluble fraction released from MTA was mainly composed by calcium hydroxide (21).

Two main mechanisms have been described for MTA sealing ability and formation of hard tissue over the material when used as root-end filling, pulp capping materials, and sealing the perforations. Friland and Rosado and Camilleri *et al.* studies showed that substance released by MTA which were kept in distilled water is basically calcium hydroxide (18,19). On the other hand, when MTA kept in PBS for period of times hydroxyapatite crystals were formed over MTA in two other research studies (22,23). It has been shown that the formation of hard tissue needs high pH which calcium hydroxide production of MTA may help at the first step of MTA placement. Camilleri *et al.* in their experiment observed phosphorous in analysis of set MTA when it had been immersed in phosphorous solution.

Meanwhile, SEM images of above mentioned samples in their study showed crystal formation over MTA (19). Based on the results of this study as well as previously published studies (18,19,21-23) we suggest that hydration of

MTA in contact with tissue fluid provide calcium hydroxide which dissociate into calcium and hydroxyl ion. The calcium ion would react with phosphorous of the tissue fluid providing hydroxyapatite over MTA surface which is responsible for MTA advantageous properties that MTA has in contact with dental and periapical tissues. Release of calcium content, production of calcium hydroxide, increasing pH and at last the formation of hydroxyapatite all may be responsible of MTA biocompatibility and sealing ability and bioactive regeneration.

Bozeman *et al.* in a recently published study reported that the composition of crystals forming in PBS was silicon, calcium, and phosphorus (23). However, in this study, none of the crystals showed silicon on their surface. The distinction between the methods of the two studies may explain that difference.

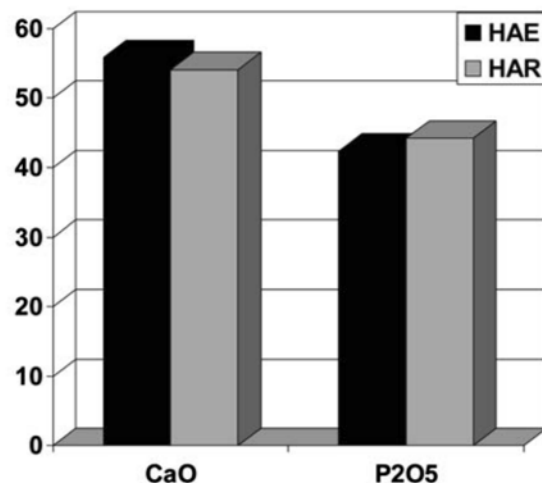


Figure 3- Comparison between compositions of crystals forming over MTA kept in PBS (MTAHA) and the composition of a standard mineral HA (SHA).

Baek *et al.* in their study have shown that there were two types of surface reactions over MTA: a crystalline structure, and newly deposited cementum that started mostly from the adjacent dentin, but was sometimes also found in islands and finally appeared as mineralized cellular cementum (5). In this study, all samples showed HA crystals at the rim; however, many of our samples had HA plaque on the resected root ends. Since hydroxyapatite crystals are formed at the margin of the cavity, the deposition of cementum is mostly formed from the adjacent dentin.

Friedland and Rosado observed that set MTA, as with many biomedical cement materials, contains many voids in the form of air bubbles, pores and capillary channels. They pose that the ability of MTA to effectively fill these voids, and other factors including the alkaline nature of MTA, may diminish bacterial leakage (18). However, no previous studies on the sealing ability of MTA (2-4, 33-35) had used PBS as a medium, and therefore, no hydroxyapatite were produced on the MTA used as root-end filling material in those experiments.

Conclusion

On the limitations of this *in vitro* study it seems that calcium ions of MTA in contact with phosphorous ions of phosphate buffered saline solution produce hydroxyapatite crystals over MTA and it may be a basis for excellent biocompatibility of this material.

Acknowledgement

This study was partially supported by The Research Committee of Kerman University of Medical Sciences. We wish to thank staff members of Electron Microscope Unit (EMU) of Research School of Biological Sciences, Australian National University, Canberra, Australia for their assistance with scanning electron microscopy and electron probe microanalysis.

References

1. Andreasen JO. Cementum repair after apicoectomy in humans. *Acta Odontol Scand* 1973; 31: 211-21.
2. Torabinejad M, Watson TF, Pitt Ford TR. Sealing ability of a mineral trioxide aggregate when used as a root end filling material. *J Endod* 1993; 19: 591-5.
3. Mangin C, Yesilsoy C, Nissan R, Stevens R. The comparative sealing ability of hydroxyapatite cement, mineral trioxide aggregate, and super ethoxybenzoic acid as root-end filling materials. *J Endod* 2003; 29: 261-4.
4. Xavier CB, Weismann R, de Oliveira MG, Demarco FF, Pozza DH. Root-end filling materials: apical microleakage and marginal adaptation. *J Endod* 2005; 31: 539-42.
5. Baek SH, Plenk H, Kim S. Periapical tissue responses and cementum regeneration with amalgam, super EBA, and MTA as root-end filling materials. *J Endod* 2005; 31: 44-9.
6. Maltezos C, Glickman GN, Ezzo P, He J. Comparison of the sealing of resilon, pro root MTA, and super-EBA as root-end filling materials: a bacterial leakage study. *J Endod* 2006; 32: 324-7.
7. Regan JD, Gutmann JL, Witherspoon DE. Comparison of Diaket and MTA when used as root-end filling materials to support regeneration of the periradicular tissues. *Inter Endod J* 2002; 35: 840-7.
8. Holland R, Souza V, Nery MJ, Otoboni Filho JA, Bernabe PFE, Dezan JR E. Reaction of rat connective tissue to implanted dentin tubes filled with mineral trioxide aggregate or calcium hydroxide. *J Endod* 1999; 25: 161-6.
9. Sousa CJ, Loyola AM, Versiani MA, Biffi JC, Oliveira RP, Pascon EA. A comparative histological evaluation of the biocompatibility of materials used in apical surgery. *Inter Endod J* 2004; 37: 738-48.
10. Ribeiro DA, Duarte MA, Matsumoto MA, Marques ME, Salvadori DM. Biocompatibility in vitro tests of mineral trioxide aggregate and regular and white Portland cements. *J Endod* 2005; 31: 605-7.
11. Shahi S, Rahimi S, Lotfi M, Yavari H, Gaderian A. A comparative study of the biocompatibility of three root-end filling materials in rat connective tissue. *J Endod* 2006; 32: 776-80.
12. Takita T, Hayashi M, Takeichi O, Ogiso B, Suzuki N, Otsuka K, Ito K. Effect of mineral trioxide aggregate on proliferation of cultured human dental pulp cells. *Inter Endod J* 2006; 39: 415-22.
13. Sipert CR, Hussne RP, Nishiyama CK, Torres SA. In vitro antimicrobial activity of Fill Canal, Sealapex, Mineral Trioxide Aggregate, Portland cement and EndoRez. *Inter Endod J* 2005; 38: 539-43.
14. Eldeniz AU, Hadimli HH, Ataoglu H, Ørastvik D. Antibacterial effect of selected root-end filling materials. *J Endod* 2006; 32: 345-9.
15. Lee SJ, Monsef M, Torabinejad M. Sealing ability of a mineral trioxide aggregate for repair of lateral root perforations. *J Endod* 1993; 19: 541-4.

16. Shipper G, Grossman ES, Botha AJ, Cleaton-Jones PE. Marginal adaptation of mineral trioxide aggregate (MTA) compared with amalgam as a root-end filling material: a low-vacuum (LV) versus high-vacuum (HV) SEM study. *Inter Endod J* 2004; 37:325-36.
17. Torabinejad M, Hong CU, McDonald F, Pitt Ford TR. Physical and chemical properties of a new root-end filling material. *J Endod* 1995; 21: 349-53.
18. Fridland M, Rosado R. Mineral trioxide aggregate (MTA) solubility and porosity with different water-to-powder ratios. *J Endod* 2003; 29: 814-7.
19. Camilleri J, Montesin FE, Brady K, Sweeney R, Curtis RV, Pitt Ford TR. The constitution of mineral trioxide aggregate. *Dent Mater* 2005; 21: 297-303.
20. Torabinejad M, Hong CU, Lee SJ, Monsef M, Pitt Ford TR. Investigation of mineral trioxide aggregate for root-end filling in dogs. *J Endod* 1995; 21: 603-8.
21. Fridland M, Rosado R. MTA Solubility: A long term study. *J Endod* 2005; 31: 376-9.
22. Sarkar NK, Caicedo R, Ritwik P, Moiseyeva R, Kawashima I. Physicochemical basis of the biologic properties of mineral trioxide aggregate. *J Endod* 2005; 31: 97-100.
23. Bozeman TB, Lemon RR, Eleazer PD. Elemental analysis of crystal precipitate from gray and white MTA. *J Endod* 2006; 32: 425-8.
24. Hench LL, Wilson J. Surface-active biomaterials. *Science* 1984; 226: 630-6.
25. Ducheyne P, El-Ghannam A, Shapiro IM. Effect of bioactive glass template on osteoblast proliferation and in vitro synthesis of bone-like tissue. *J Cell Biochem* 1994; 56: 162-7.
26. Thomson TS, Berry JE, Somerman MJ, Kirkwood KL. Cementoblasts maintain expression of osteocalcin in the presence of mineral trioxide aggregate. *J Endod* 2003; 29: 407-12.
27. Torabinejad M, Pitt Ford TR, McKendry DJ, Abedi HR, Miller DA, Kariyawasan SP. Histologic assessment of mineral trioxide aggregate as a root-end filling in monkeys. *J Endod* 1997; 23: 225-8.
28. Seux D, Couble ML, Hartmann DJ, Gauthier JP, Magloire H. Odontoblast-like cyto-differentiation of human dental pulp cells in vitro in the presence of a calcium hydroxide-containing cement. *Arch Oral Biol* 1991; 36: 117-28.
29. Vallet-Regi M, Romero AM, Ragel CV, LeGeros RZ. XRD, SEM-EDS, and FTIR studies of in vitro growth of an apatite-like layer on sol-gel glasses. *J Biomed Mater Res* 1999; 44: 416-21.
30. Salinas AJ, Martin AI, Vallet-Regi M. Bioactivity of three CaO-P₂O₅-SiO₂ sol-gel glasses. *J Biomed Mater Res* 2002; 61: 524-32.
31. Yuan H, Li Y, de Bruijn JD, de Groot K, Zhang X. Tissue responses of calcium phosphate cement: a study in dogs. *Biomaterials* 2000; 21: 1283-90.
32. Asgary S, Parirokh M, Eghbal MJ, Brink F. Chemical differences between white and gray mineral trioxide aggregate. *J Endod* 2005; 31: 101-3.
33. Fischer EJ, Arens DE, Miller CH. Bacterial leakage of mineral trioxide aggregate as compared with zinc-free amalgam, intermediate restorative material, and Super-EBA as a root-end filling material. *J Endod* 1998; 24: 176-9.
34. Wu MK, Kontakiotis EG, Wesselink PR. Long-term seal provided by some root-end filling materials. *J Endod* 1998; 24: 557-60.
35. De Bruyne RJ, Rosiers L, De Moor RJ. Long-term assessment of the seal provided by root-end filling materials in large cavities through capillary flow porometry. *Inter Endod J* 2006; 39: 493-501.